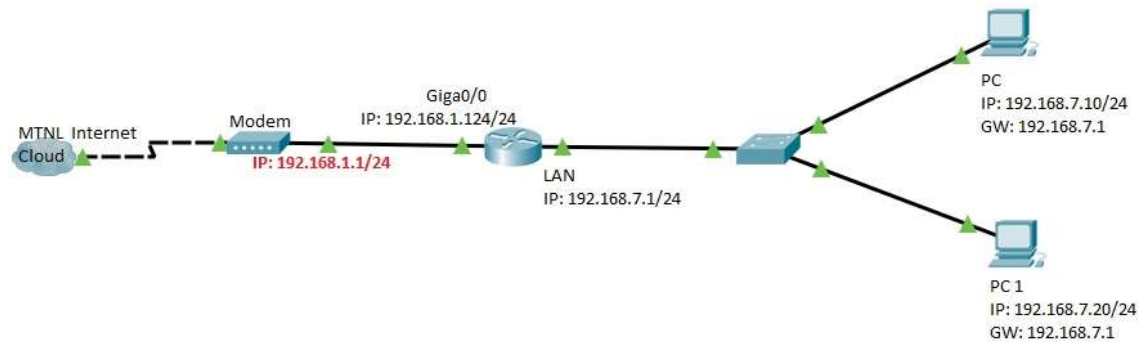


Verify Destination NAT/Port Forwarding



RDP Port No: 3389

Router> enable

Router#

Router_(Config)#

Router_(Config)# ip nat inside source static tcp 192.168.7.10 3389 125.19.29.144 3389

Router_(Config)# ip nat inside source static udp 192.168.7.10 3389 125.19.29.144 3389

```
1 ip nat inside source static tcp 192.168.7.10 3389 125.19.29.144 3389
2 ip nat inside source static udp 192.168.7.10 3389 125.19.29.144 3389
3 ip nat inside source list test interface GigaEthernet0/0
4
5
6
7
8 Router#
```